



Our Vision Is To Be Our Customers Preferred Container Supplier.



Our Vision Is To Be Our Customers Preferred Container Supplier



We Manufacture Superior Steel Drum Packaging Solutions

We're passionate about providing exceptional products and services for our customers. Quality, reliability and sustainability are embedded in our business, based on lean manufacturing, standardization, and continuous improvement. The best solution for your steel drum container needs is one that provides complete life-cycle services from manufacturing, recycling to reuse.

NEW STANDARD STEEL DRUMS



We manufacture a complete line of new steel drums from 10-85 gallon capacity.

- **Tighthead or Openhead**
- **Drum Interior: Unlined, Lined**
- **Optional silk-screening, stenciling, or palletization**
- **UN Rated, DOT 7A Type A, FDA Compliant, Kosher & Halal available**
- **UN, IATA, DOE, UFC, NQA1, Kosher & FDA compliant**
- **Available colors: standard 12 ISDI color options & custom colors upon request**
- **Configuration: Conventional, Corrugations or "W" Rolling hoops**

7A TYPE A STEEL DRUMS



Our drums have been tested according to DOT 7A Type A, IP-1, IP-2 and IP-3 regulations and are intended for use as shipping and storage containers for permissible radioactive materials.

- **Made from carbon steel**
- **10, 16, 30, 55 and 85 gallon capacities**
- **Compliant with DOT regulations**
- **UN Performance Rated**

Our Vision Is To Be Our Customers Preferred Container Supplier

ISO EXPORT STEEL DRUMS



Our 55 gallon (208 L) steel drum with a "W" swedge configuration that is available as an openhead or tighthead. It is specifically designed to optimize transportation for drums being shipped overseas.

- Fits 4 abreast in overseas shipping containers
- UN Performance Rated
- Meets current ANSI MH2a standards
- Improved vacuum/pressure performance
- Safer transport with "W" swedge configuration
- Reduces freight cost by 11%
- Ultimate fire protection
- Nylon fittings available with UL rating for added security

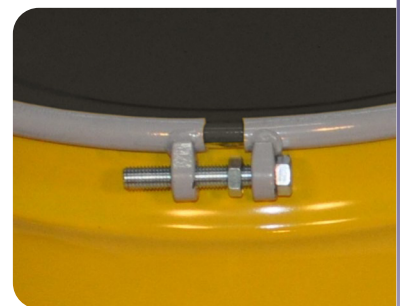


SALVAGE/OVERPACK STEEL DRUMS



Our salvage drums are designed to hold damaged/leaking drums to ensure safe transportation through public areas. Overpack drums are used as additional protection for the shipment of drums and other packages.

- UN performance rated salvage drums
- All coatings available
- All black with white cover
Overpack drum
- All yellow with black cover, with red silk screen "Salvage Drum"
- Superior stacking strength
- Ultimate fire protection



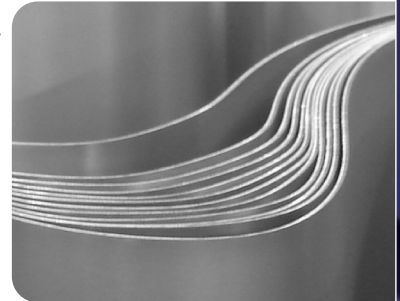
Our Vision Is To Be Our Customers Preferred Container Supplier

KNOCK DOWN STEEL DRUMS



We provide the formed, welded and nested components for assembly with a "knock-down" system. Over sixty (60) shells can be nested on one pallet.

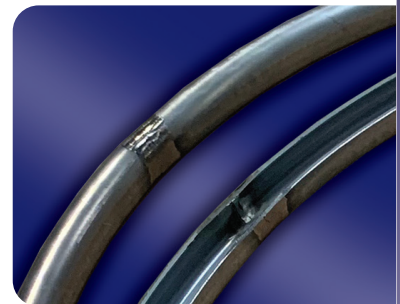
- Offered in 55 gallon capacity
- Includes welded bodies, bottoms & covers for both openhead & tighthead drums



CHIME BAND STEEL DRUMS



These drums are ideal for continuous loop applications where a durable drum is needed to meet increasingly stringent package reuse regulations.



CORRUGATED STEEL DRUMS



Our cold-rolled carbon steel 55 gallon corrugated drums add even more durability from shock and compression when being managed. Whether packaging hazardous chemicals or food products, our corrugated drums provide more safety and durability.

- Tighthead & Openhead
- Drum Interior: unlined & lined
- Optional silk-screening, stenciling, or palletization
- UN Rated, DOT 7A Type A, FDA Compliant, Kosher & Halal available
- UN, IATA, DOE, UFC, NQA1, Kosher & FDA compliant
- Available colors: standard 12 ISDI color options & custom colors upon request
- Configuration: straight sided Corrugations with "W" Rolling hoops

Our Vision Is To Be Our Customers Preferred Container Supplier

AGITATOR STEEL DRUMS



Our open head steel drum is equipped with a controllable agitator mixing device. This drum is suitable for a wide range of industrial applications where contents need to be mixed or stirred while in the drum.

Drum Features:

- **Description:** Lined & Unlined Openhead Agitator
- **UN Rated**
- **Gauge:** Contact us for available options
- **Cover Fittings:** 2" & 3/4" Plugs, 2" Center Cone Assembly
- **Gasket:** Contact us for available options
 - **Closure Ring:** 12 Gauge Bolt Ring
 - **Color:** Black Body/ White Cover, Standard ISDI Color Options & Custom Colors Upon Request
 - **Agitator:** Single blade, double blade, lined & plated agitators

